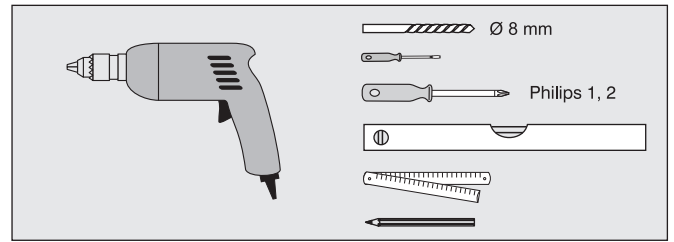


LEONE_Highboard

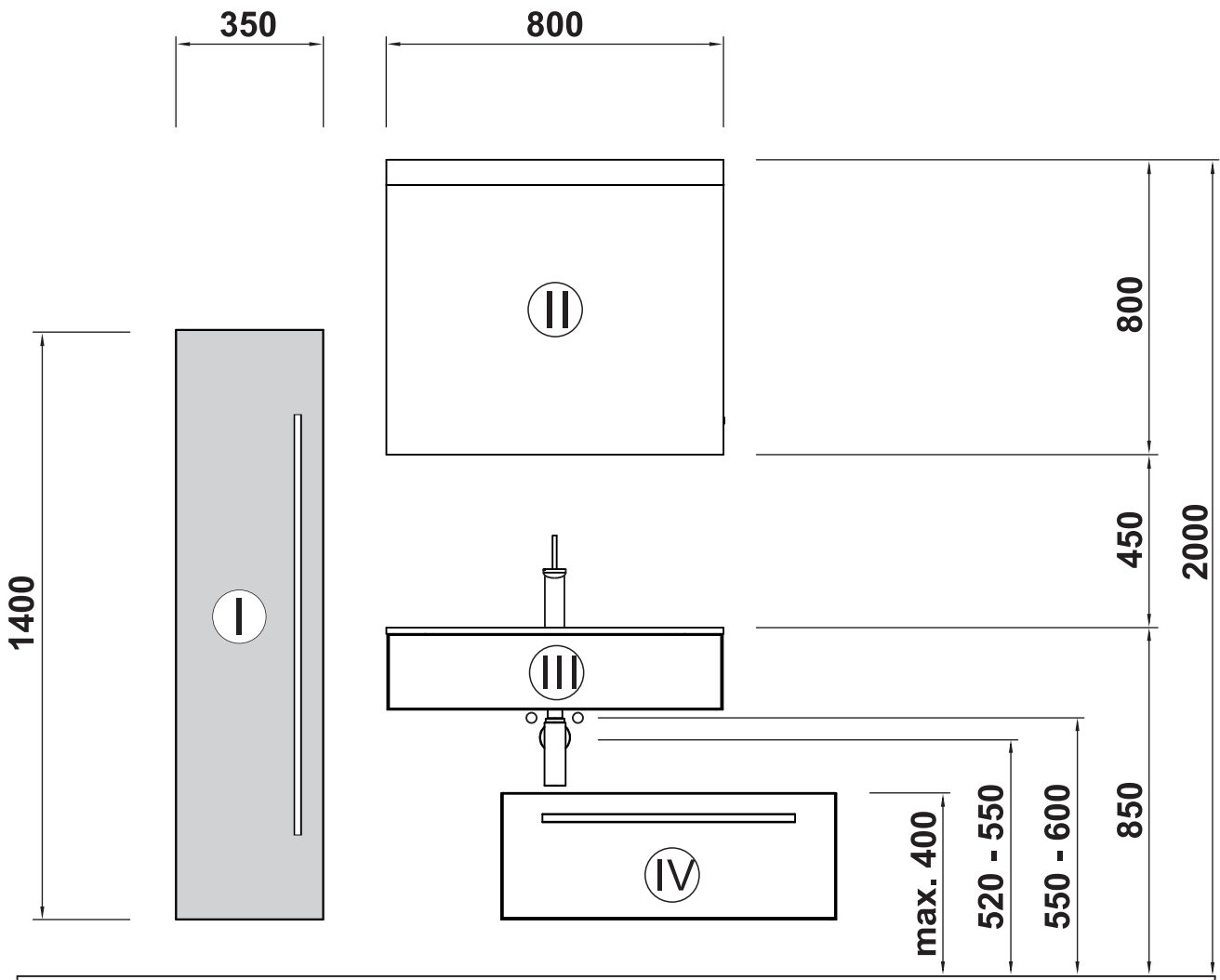


A	4 x	
B	4 x	
C	1 x	
D	6 x	
E	2 x	
F, G	3 x	
H	1 x	
I	3 x	
J	8 x	



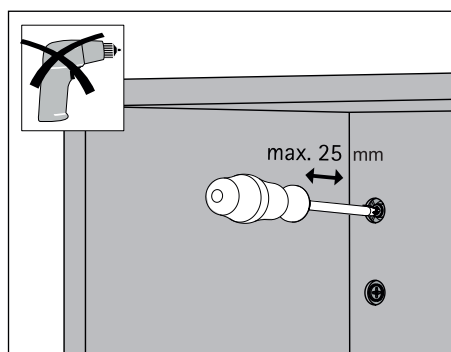
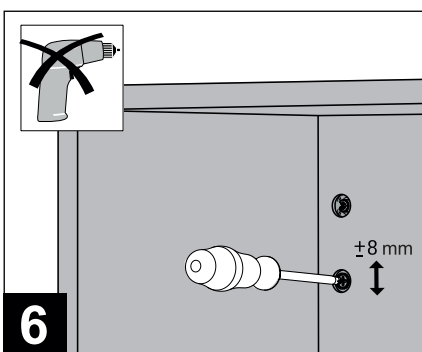
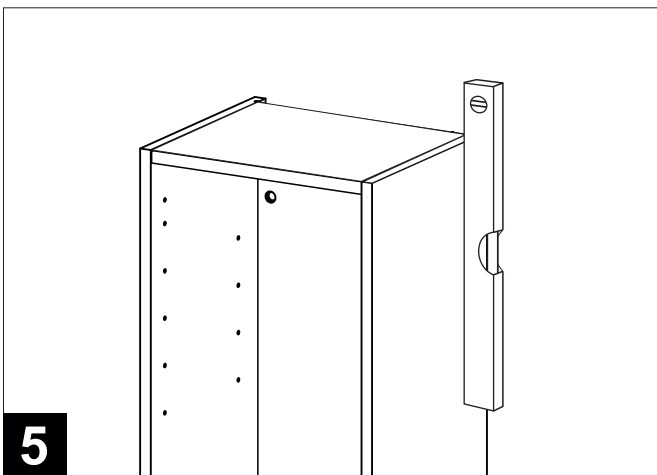
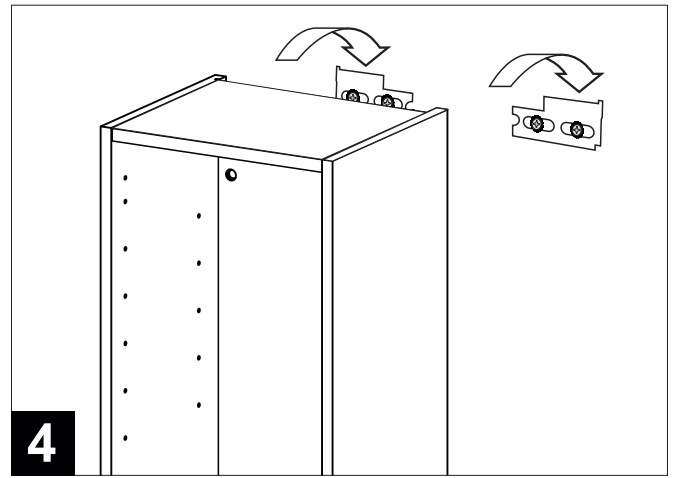
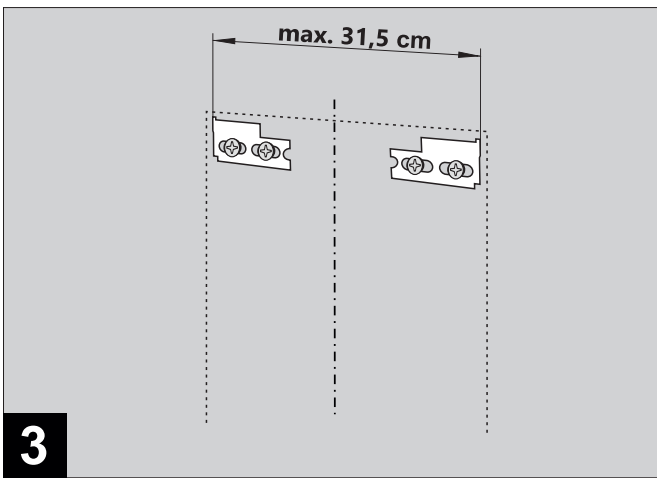
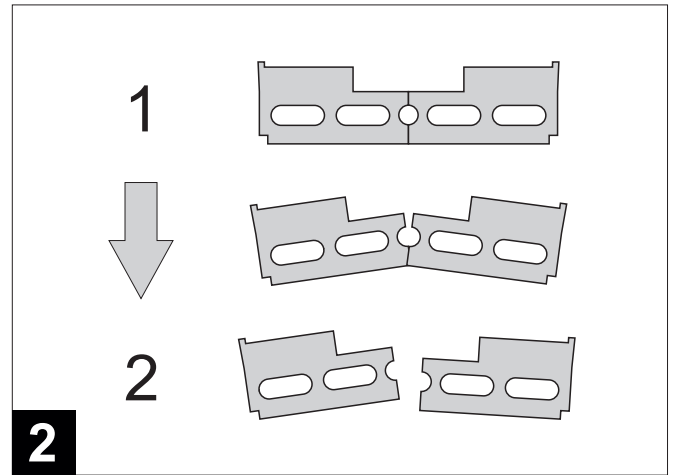
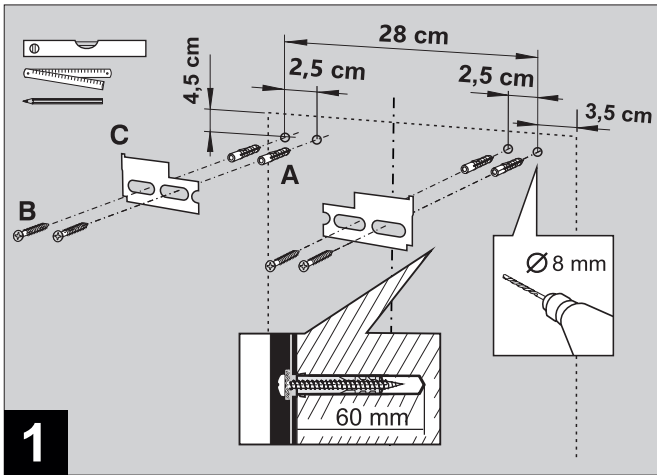
- I - LEONE_Highboard
- II - LEONE_Leuchtspiegel
- III - LEONE_WUS
- IV - LEONE_US

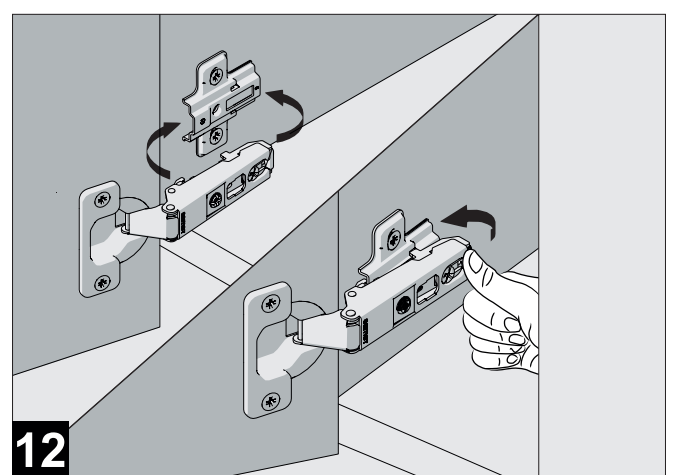
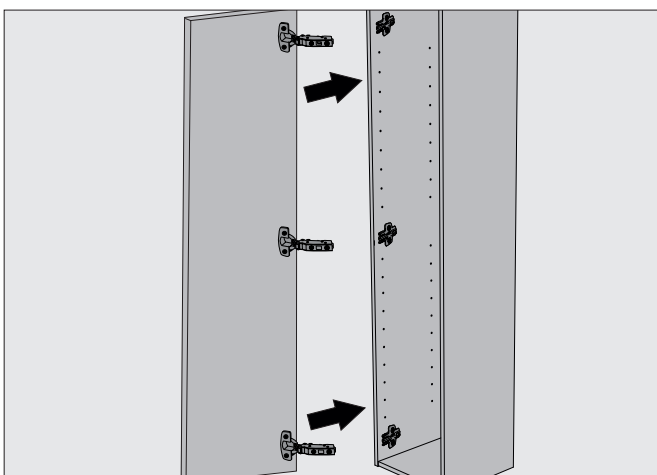
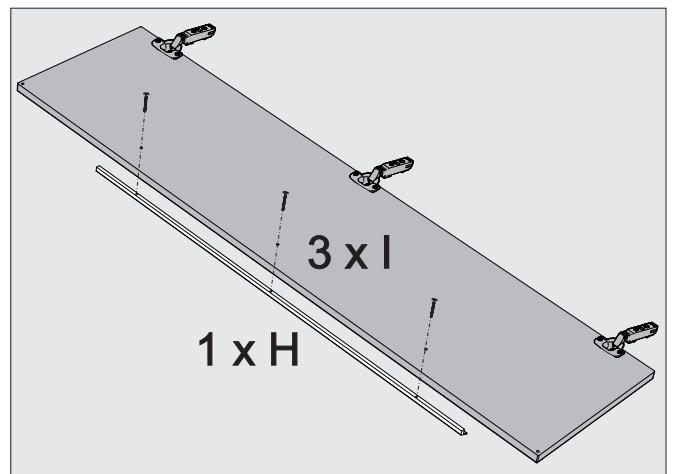
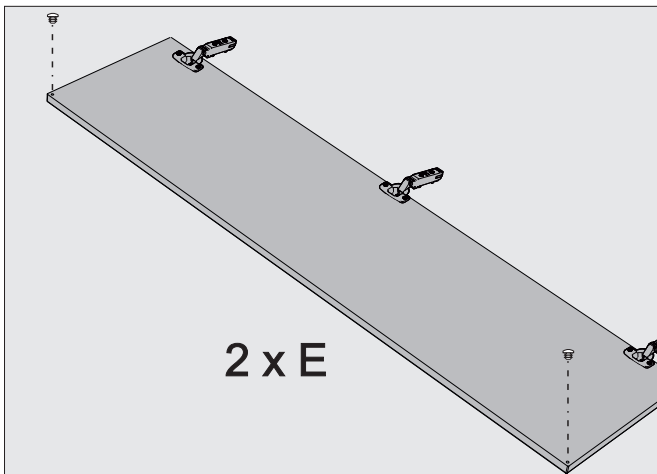
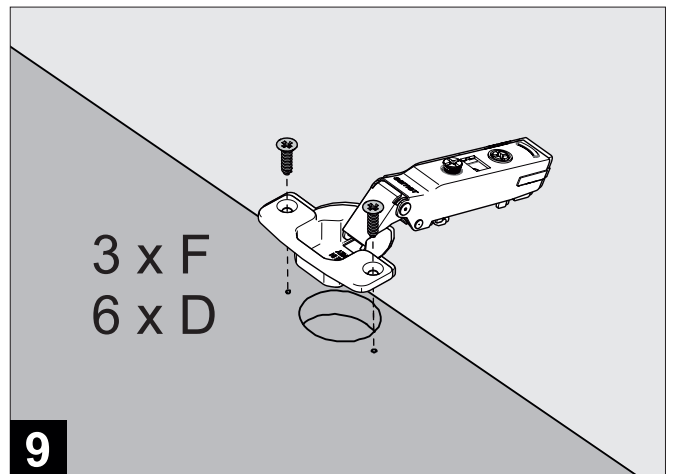
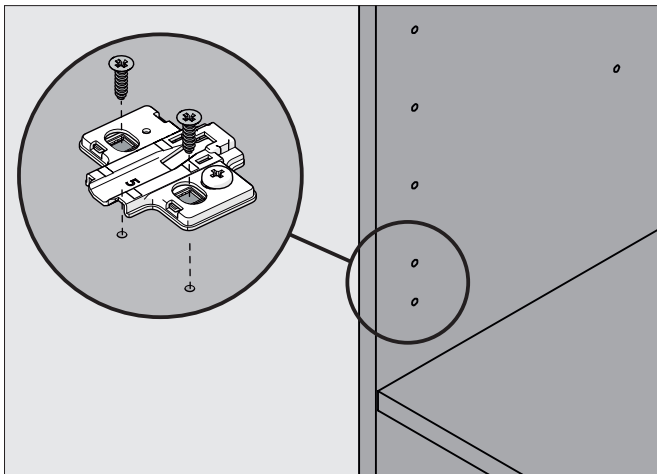
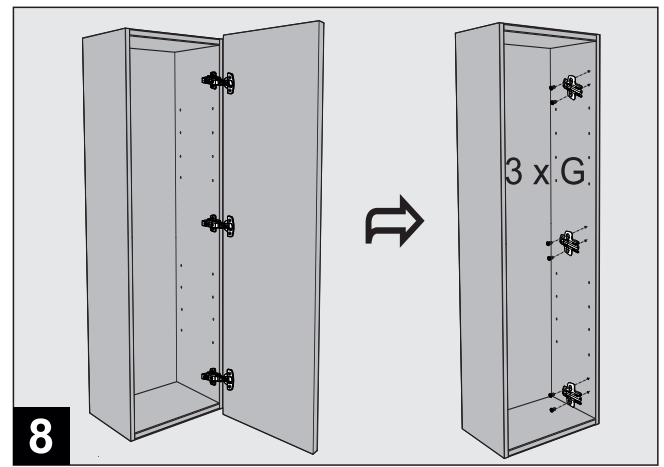
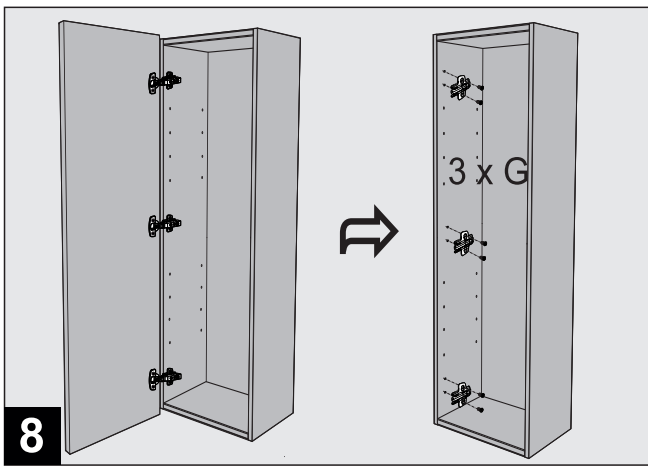
Nummerierung entspricht der empfohlenen Montagereihenfolge/
numbering conforms to the assembly sequence recommended

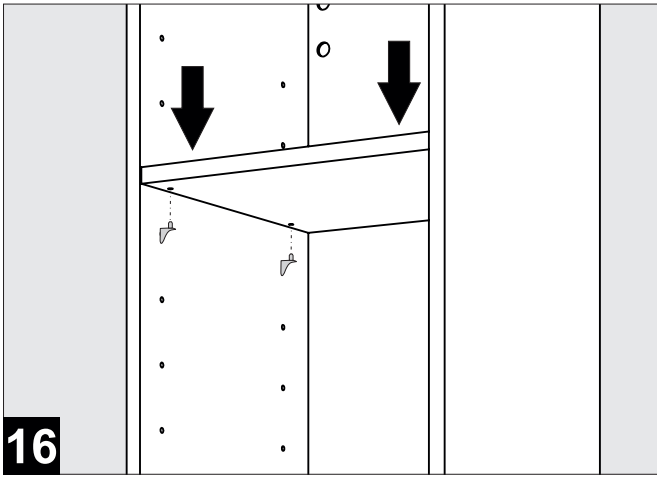
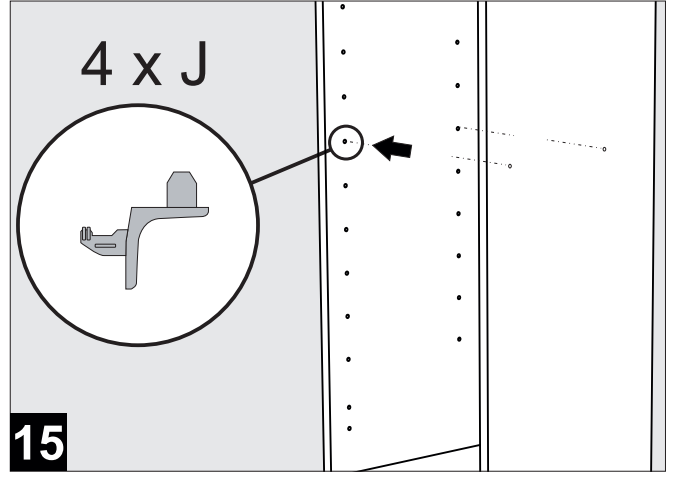
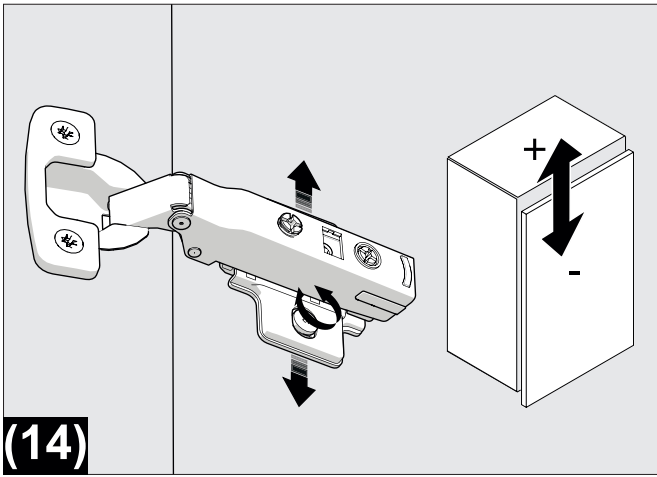
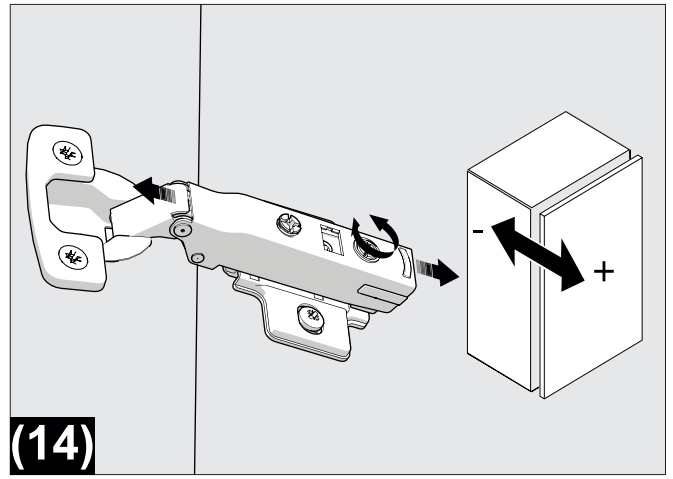
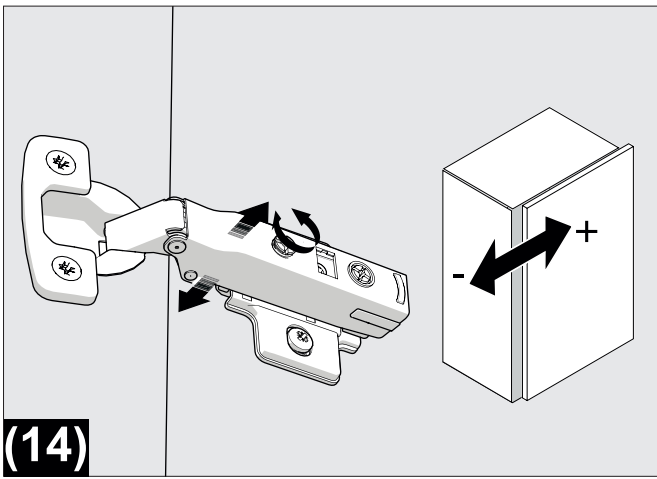




LEONE HIGHBOARD



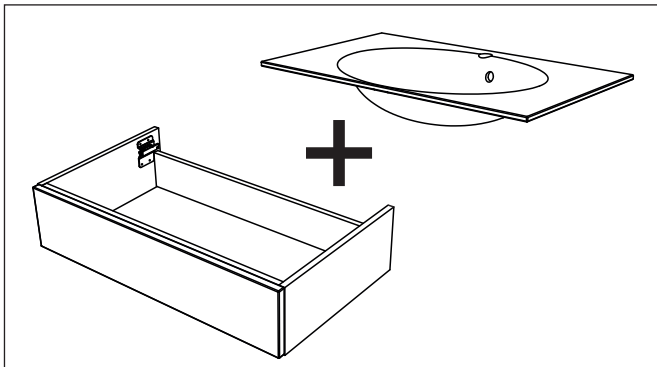
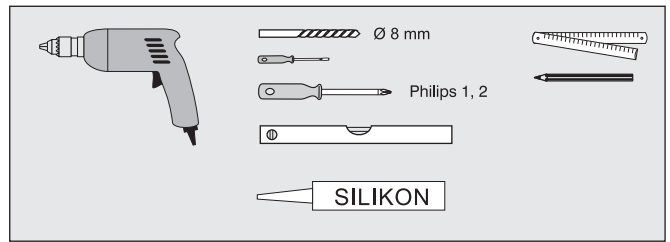




LEONE_WUS

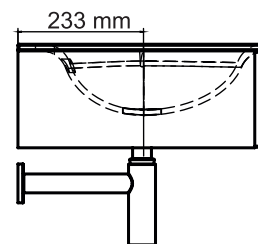
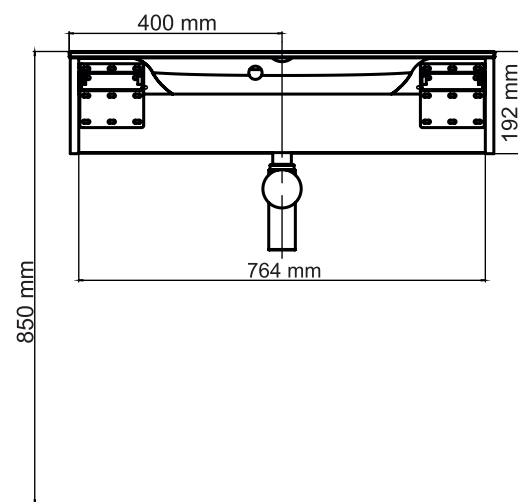
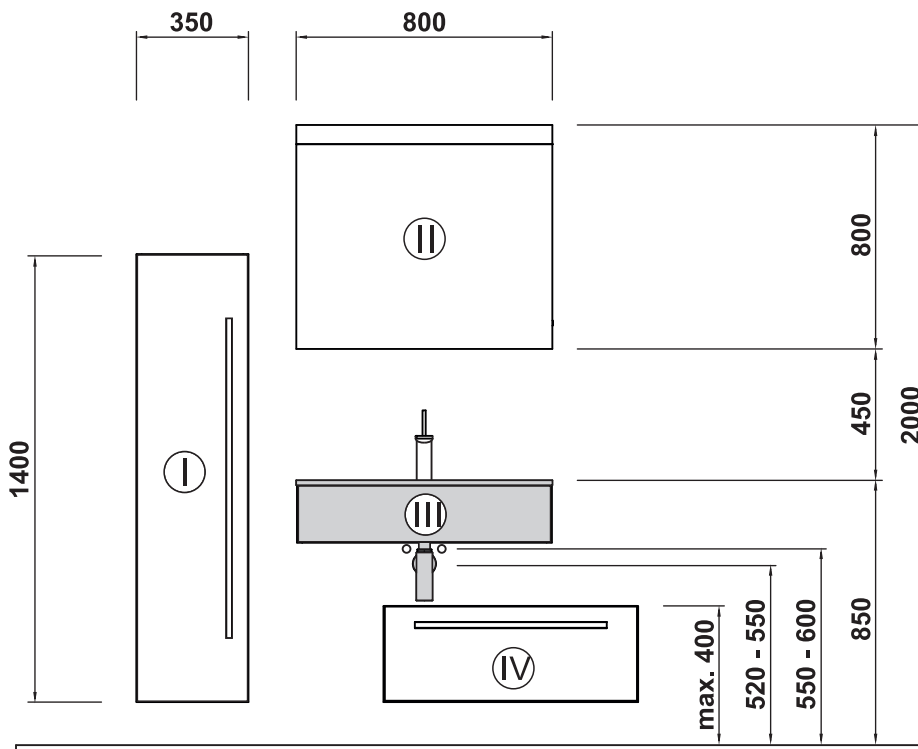


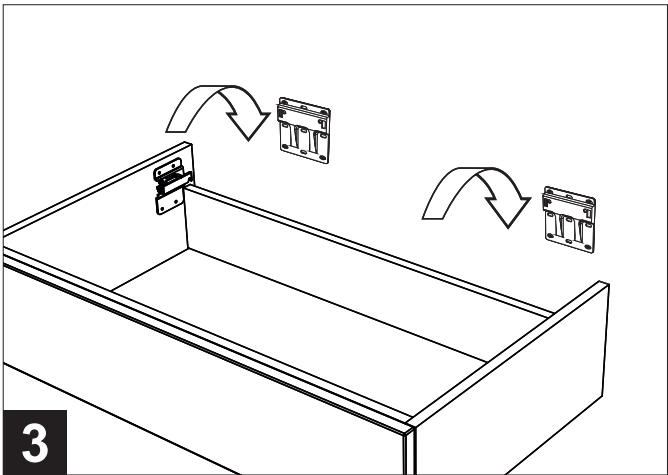
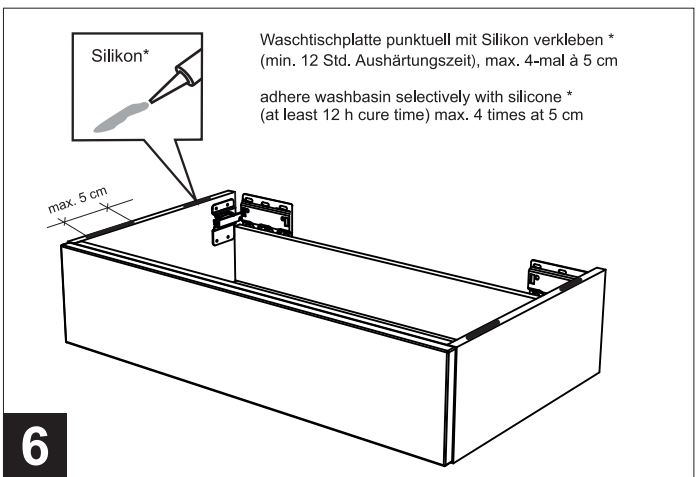
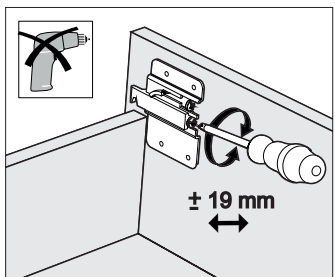
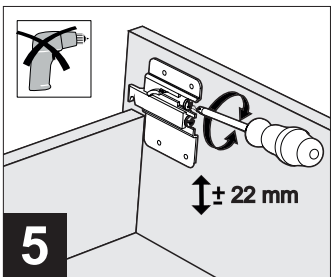
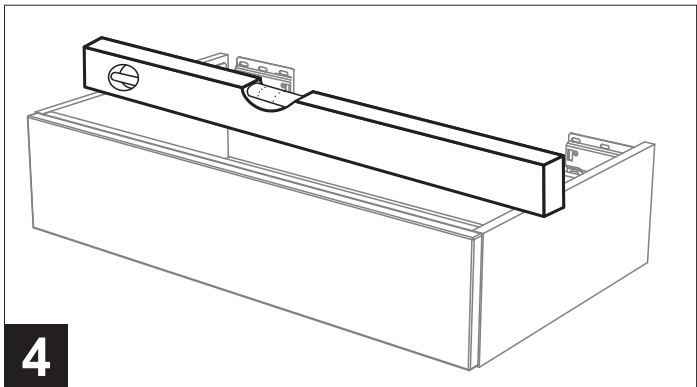
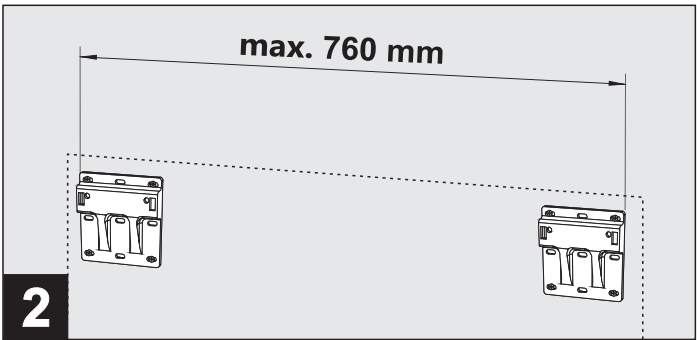
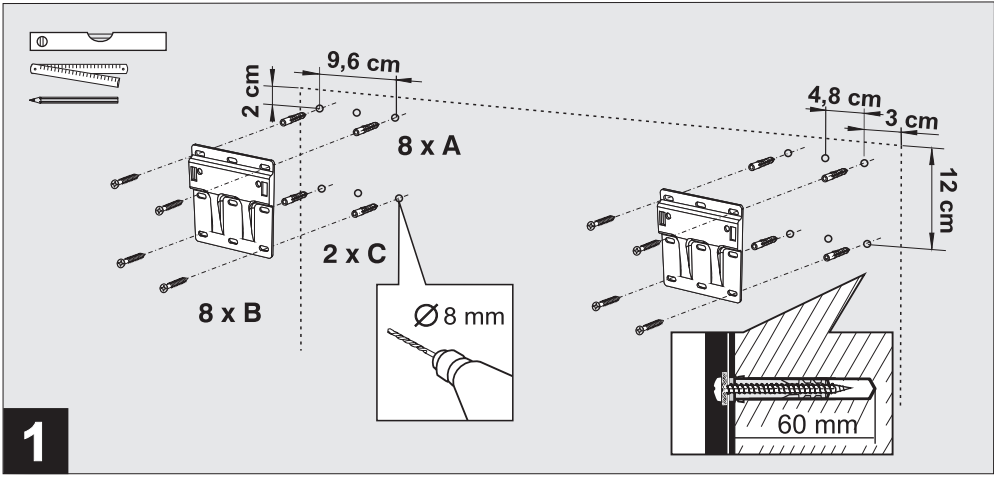
A	8 x	
B	8 x	
C	2 x	



- I - LEONE_Highboard
- II - LEONE_Leuchtspiegel
- III - LEONE_WUS
- IV - LEONE_US

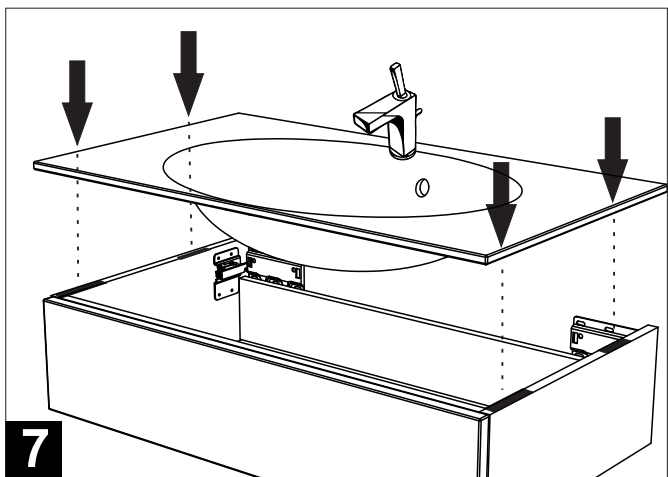
Nummerierung entspricht der empfohlenen Montagereihenfolge/
numbering conforms to the assembly sequence recommended





Bitte beachten :
Waschtischplatte vor der Montage (Silikon) bitte unbedingt auf eventuelle Transportschäden untersuchen. Reklamationen von bereits verklebten Platten können nicht mehr anerkannt werden.
 Beim befestigen mit Silikon bitte nicht vollflächig auftragen, sondern nur sparsam auf die Korpusoberseite. Durch Aufschneiden des Silikonkautschuks kann die Waschtischplatte auf diese Weise später wieder abgenommen werden. (z.B. bei Umzug...).

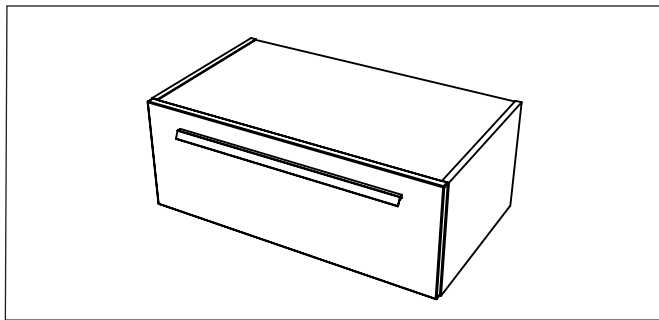
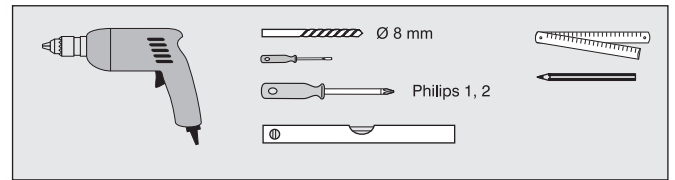
Attention :
Please check the washbasin for damage before you fix it with silicone. Already fixed washbasins cannot be complained.
 Don't apply silicone all over the cabinet, please apply only a little on the cabinet topside. If you cut the silicone later you can easily remove the washbasin. (for example: for move).



LEONE_US

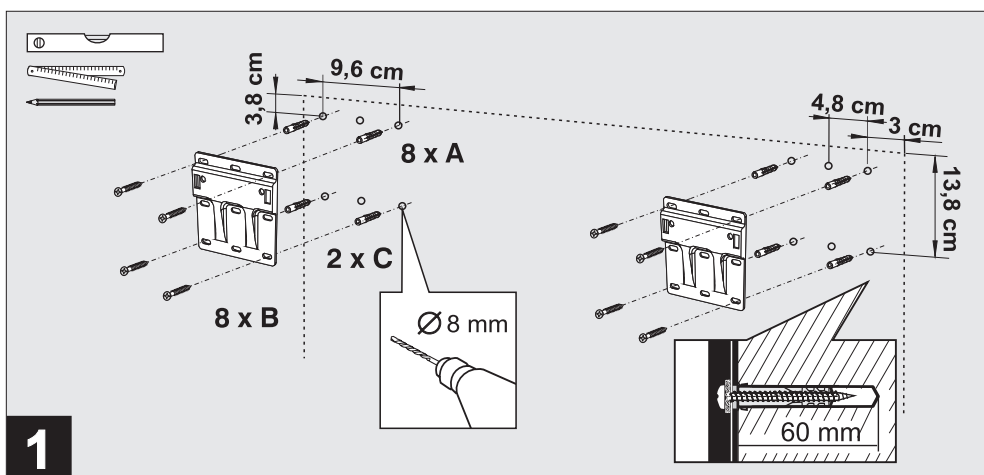
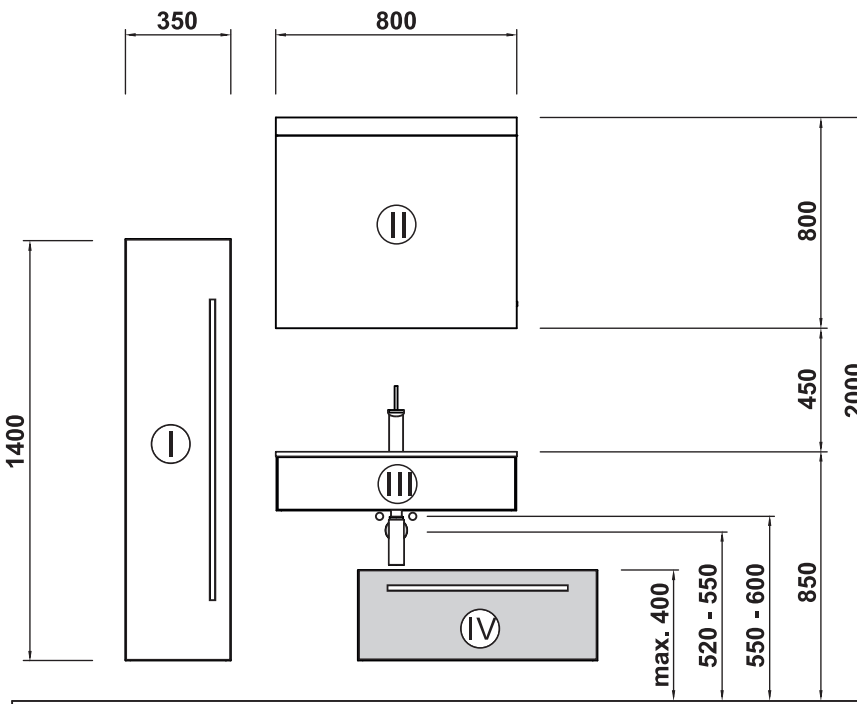


A	8 x	
B	8 x	
C	2 x	
D	1 x	
E	2 x	

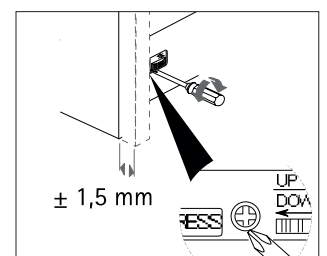
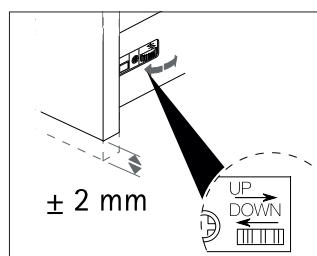
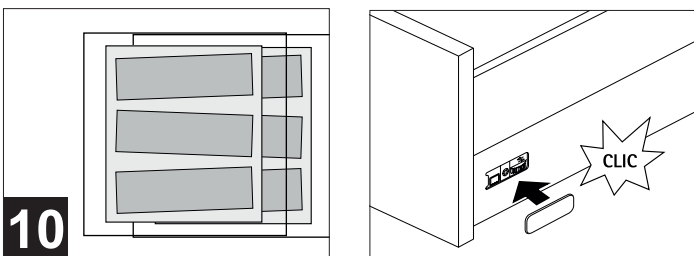
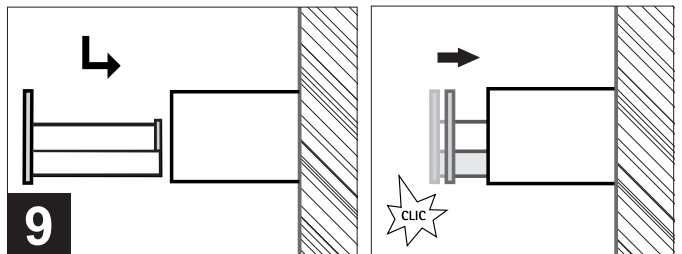
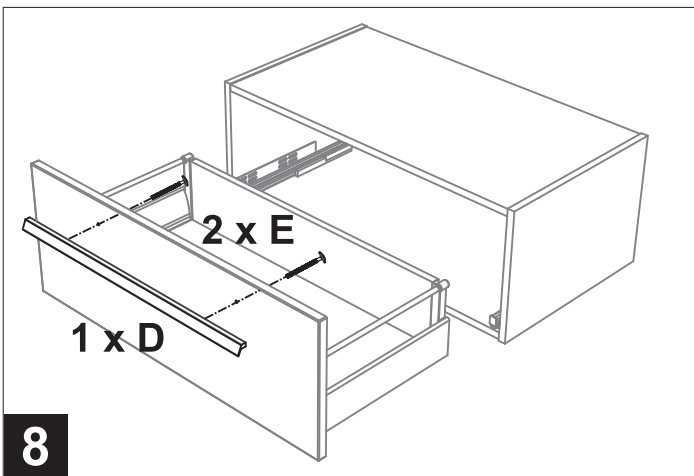
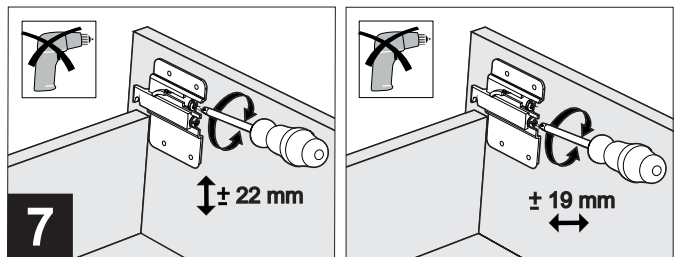
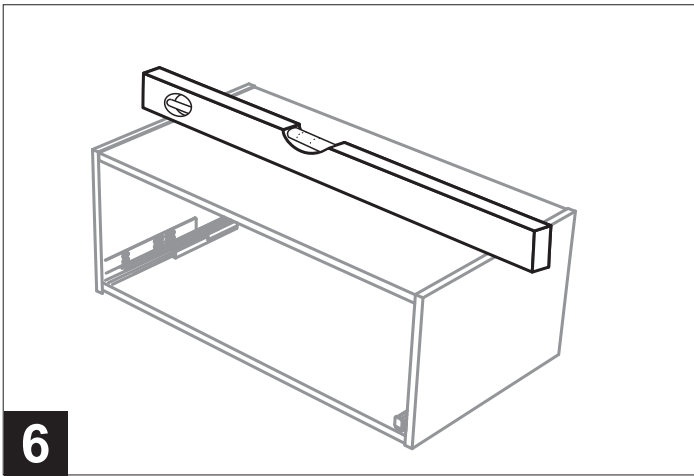
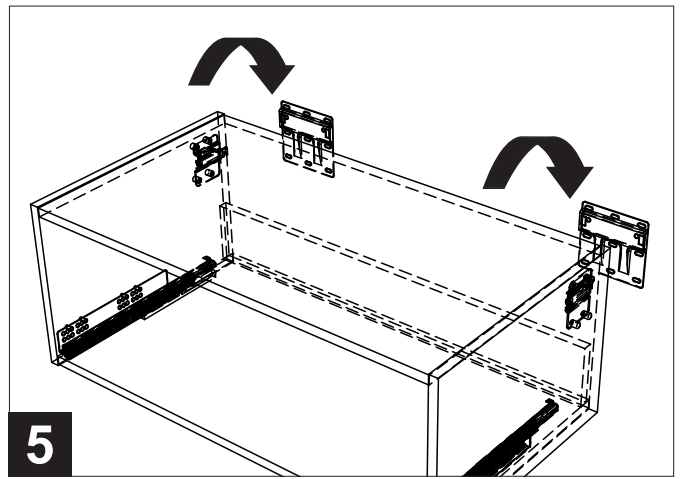
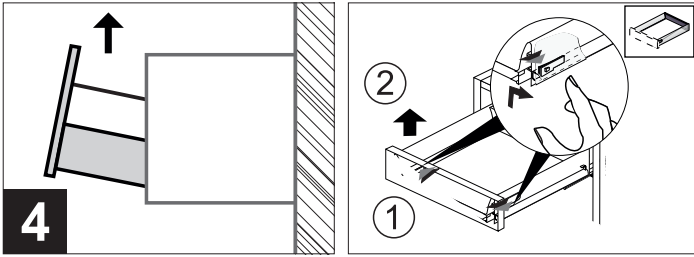
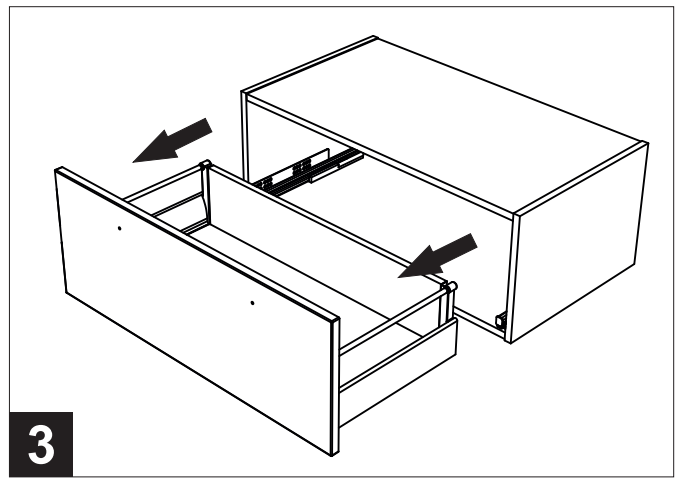
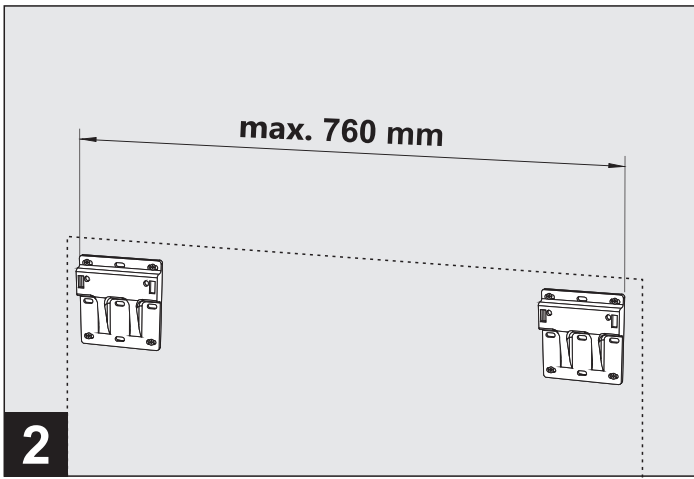


- I - LEONE_Highboard
- II - LEONE_Leuchtspiegel
- III - LEONE_WUS
- IV - LEONE_US

Nummerierung entspricht der empfohlenen Montagereihenfolge/
numbering conforms to the assembly sequence recommended



1



Pflege, Reinigung, Garantie

Pflege, Reinigung: Oberflächen nur mit einem feuchten Tuch reinigen, evtl. milden Allzweckreiniger verwenden. Keine scheuernden oder lösungsmittelhaltigen Reinigungsmittel oder scheuernden Schwämme benutzen. Alu-Schränke: keine Säuren! Kristallglasspiegel nur mit einem weichen Tuch reinigen. Hartnäckigen Schmutz hier mit klarem Wasser und ausgewrungenem Leder beseitigen. Bitte für Spiegel niemals chemische Reinigungsmittel verwenden.

Garantie: Für unsere Erzeugnisse gewähren wir ab Verkaufstag eine Garantie von 2 Jahren. Ausgeschlossen von dieser Garantie sind Schäden durch nicht fachgerechte Montage, unsachgemäße Behandlung sowie Verschleißteile wie Lampen und Starter. Bei Reparaturen bitte nur Originalteile verwenden, Elektroreparaturen nur vom Elektrofachmann ausführen lassen, keine Änderungen am Erzeugnis vornehmen! Ansonsten müssen wir jede Haftung ablehnen, der Garantieanspruch geht verloren. Unser Kundendienst hilft Ihnen bei Problemen. Für Hinweise und Anregungen sind wir immer offen.

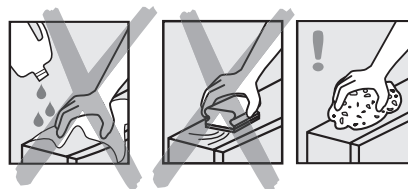
Änderungen und Irrtümer vorbehalten.

Care, cleaning, guarantee

Care and Cleaning Only use a damp cloth to clean the surfaces, if necessary with a mild all-purpose cleaning liquid. Do not use any scouring detergents, detergents that contain solvents or abrasive sponges. Aluminium cabinets: no acids! The crystal glass mirror may only be cleaned with a soft cloth. Remove stubborn dirt with clear water and a wrung-out chamois leather. Please never use chemical detergents on the mirrors.

Guarantee: We guarantee our products for 2 years from the date of purchase. Damage caused by improper handling or incorrect installation and expendable parts such as bulbs and starter switches are excluded from the guarantee. Only genuine parts may be used for repairs. Electric repairs may only be done by qualified electricians. Do not make any alterations to the product. Otherwise, we shall cease to be liable and warranty claims will not be accepted. Our customer support will help you have any problems. We are always grateful for information and suggestions from customers.

Subject to alterations. Errors excepted.



Bei Reklamationen diesen Abschnitt (Kopie) **zusammen mit dem Kaufbeleg** an Jokey schicken.
If there is a problem send this coupon (or copy) **together with the receipt** back to Jokey.

QS

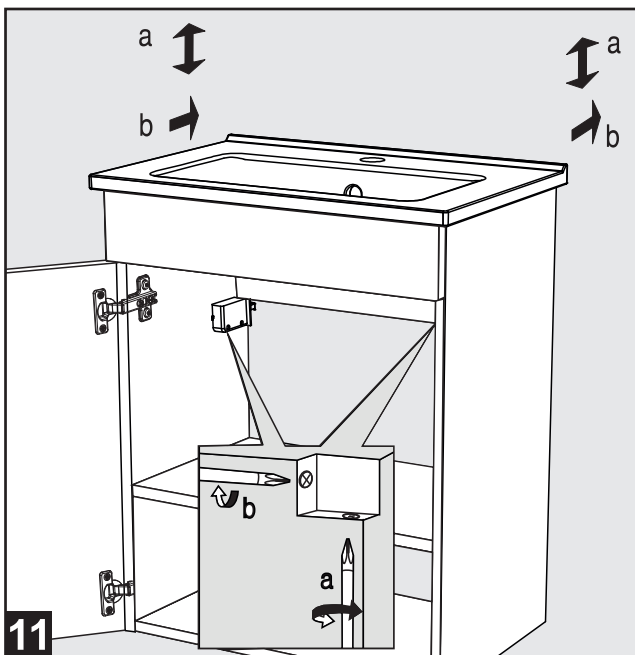
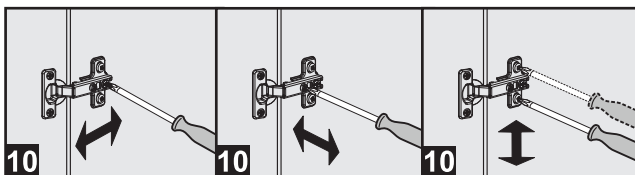
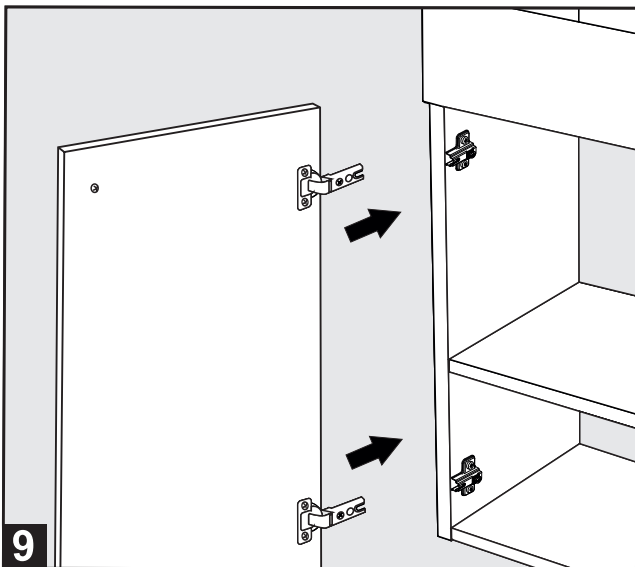
→ Jokey Service

21 70221 Leone Highboard / 07 / 2022
21 70250 Leone Waschtischunterschrank
21 70220 Leone Unterschrank

Jokey Sohland GmbH
Industriestr. 4
D - 02689 Sohland / Spree

Tel.: +49(0)35936 / 36-0
Tel. Service: +49(0)35936 / 36-2265
email: js.service@jokey.com
Fax: +49(0)35936 / 36-2222
Fax Service: +49(0)35936 / 36-2281

www.jokey-online.com



Pflege, Reinigung, Garantie

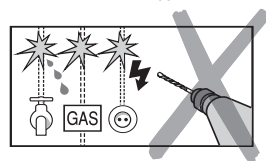
Pflege, Reinigung: Oberflächen nur mit einem feuchten Tuch reinigen, evtl. milden Allzweck-reiniger verwenden. Keine scheuernden oder lösungsmittelhaltigen Reinigungsmittel oder scheuernden Schwämme benutzen. Alu-Schränke: keine Säuren! Kristallglasspiegel nur mit einem weichen Tuch reinigen. Hartnäckigen Schmutz hier mit klarem Wasser und ausge-wungenem Leder beseitigen. Bitte für Spiegel niemals chemische Reinigungsmittel verwenden.

Garantie: Für unsere Erzeugnisse gewähren wir ab Verkaufstag eine Garantie von 2 Jahren. Ausgeschlossen von dieser Garantie sind Schäden durch nicht fachgerechte Montage, unsachgemäße Behandlung sowie Verschleißteile wie Lampen und Starter. Bei Reparaturen bitte nur Originalteile verwenden, Elektroreparaturen nur vom Elektrofachmann ausführen lassen, keine Änderungen am Erzeugnis vornehmen! Ansonsten müssen wir jede Haftung ablehnen, der Garantieanspruch geht verloren. Unser Kundendienst hilft Ihnen bei Problemen. Für Hinweise und Anregungen sind wir immer offen. Änderungen und Irrtümer vorbehalten.

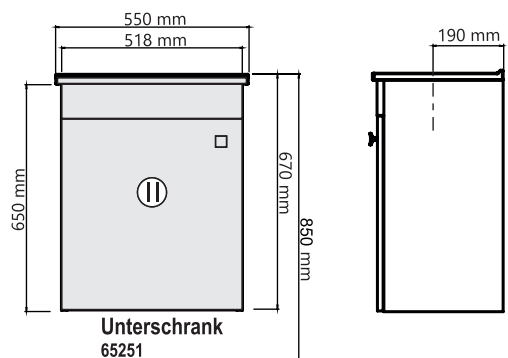
Care, cleaning, guarantee

Care and Cleaning Only use a damp cloth to clean the surfaces, if necessary with a mild all-purpose cleaning liquid. Do not use any scouring detergents, detergents that contain solvents or abrasive sponges. Aluminium cabinets: no acids! The crystal glass mirror may only be cleaned with a soft cloth. Remove stubborn dirt with clear water and a wrung-out chamois leather. Please never use chemical detergents on the mirrors.

Guarantee: We guarantee our products for 2 years from the date of purchase. Damage caused by improper handling or incorrect installation and expendable parts such as bulbs and starter switches are excluded from the guarantee. Only genuine parts may be used for repairs. Electric repairs may only be done by qualified electricians. Do not make any alterations to the product. Otherwise, we shall cease to be liable and warranty claims will not be accepted. Our customer support will help you have any problems. We are always grateful for information and suggestions from customers. Subject to alterations. Errors excepted.



A x B x C



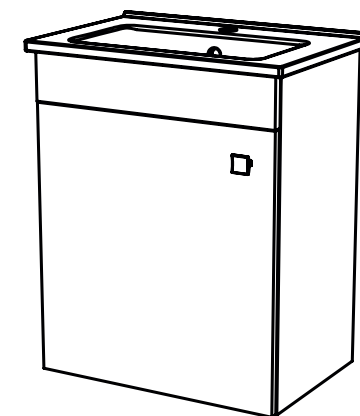
Bei Reklamationen diesen Abschnitt (Kopie) **zusammen mit dem Kaufbeleg** an Jokey schicken.
If there is a problem send this coupon (or copy) **together with the receipt** back to Jokey.

QS

→ Jokey Service

21 65251 Nelma Unterschrank / 02 / 2023

Jokey Sohland GmbH Service Industriestr. 4 D - 02689 Sohland / Spree
Tel.: +49(0)35936 / 36-0 Tel. Service: +49(0)35936 / 36-2265 email: js.service@jokey.com
Fax: +49(0)35936 / 36-2222 Fax Service: +49(0)35936 / 36-2281 http://www.jokey-online.com

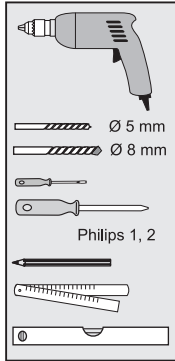


NELMA
Unterschrank

21 65251

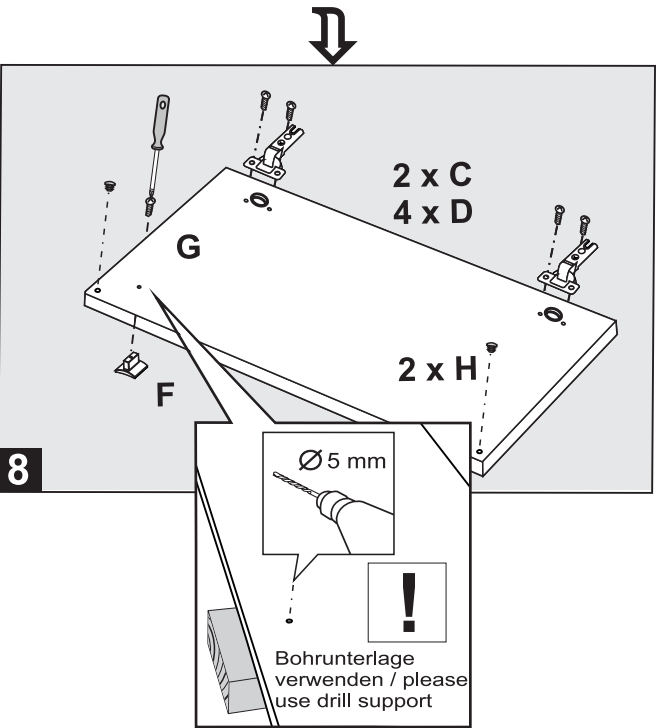
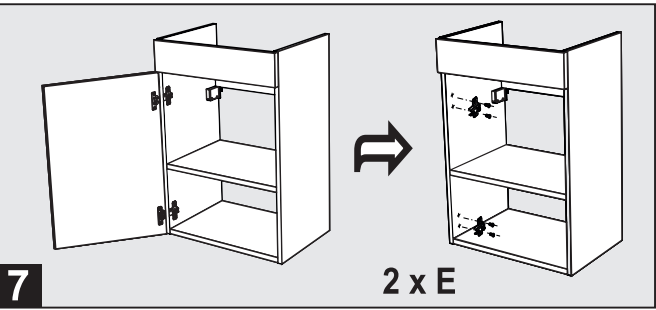
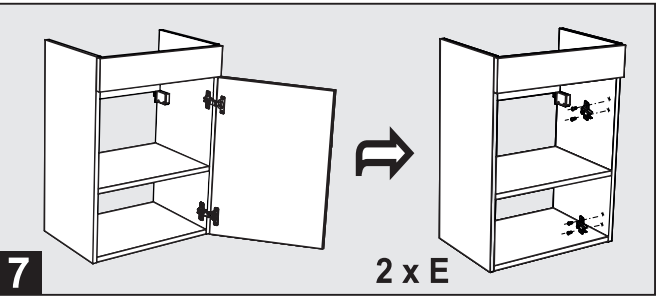
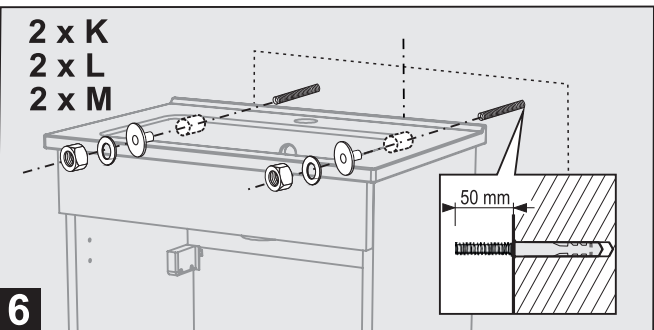
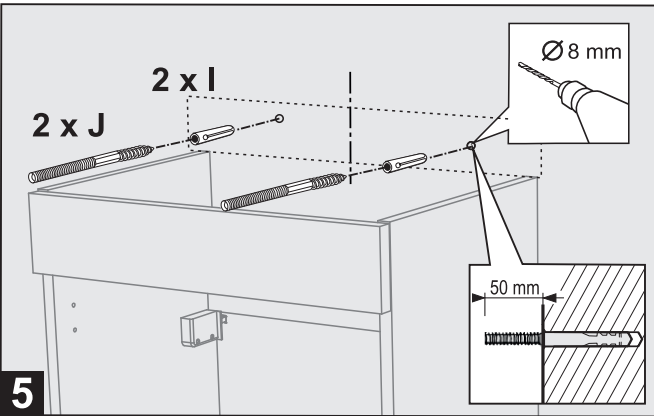
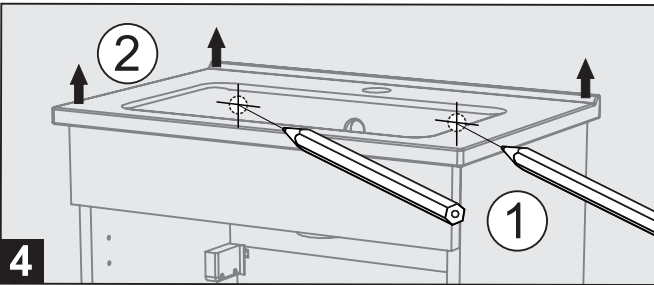
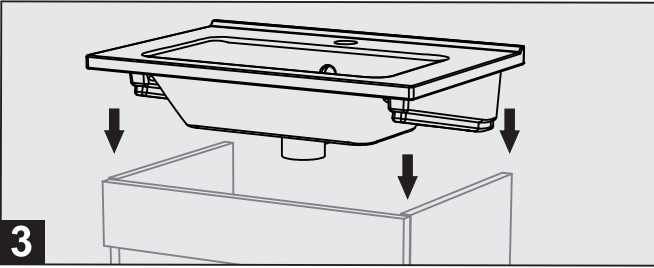
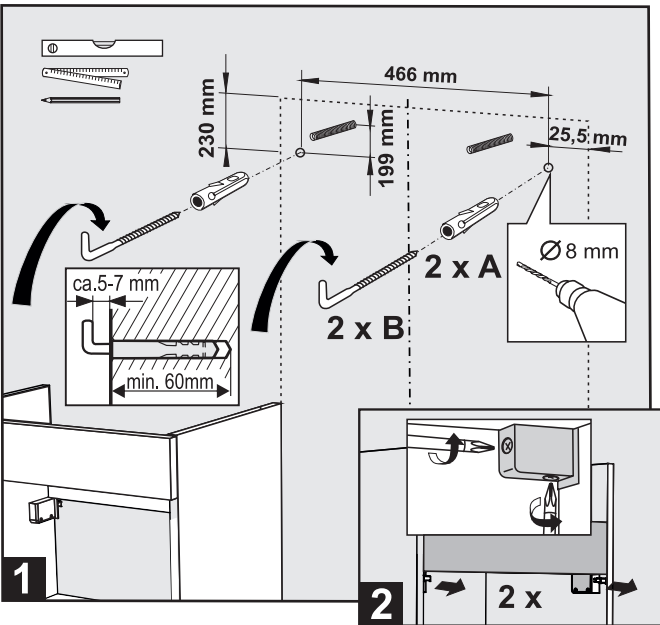


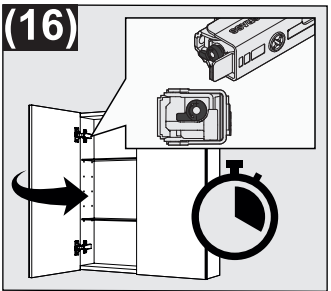
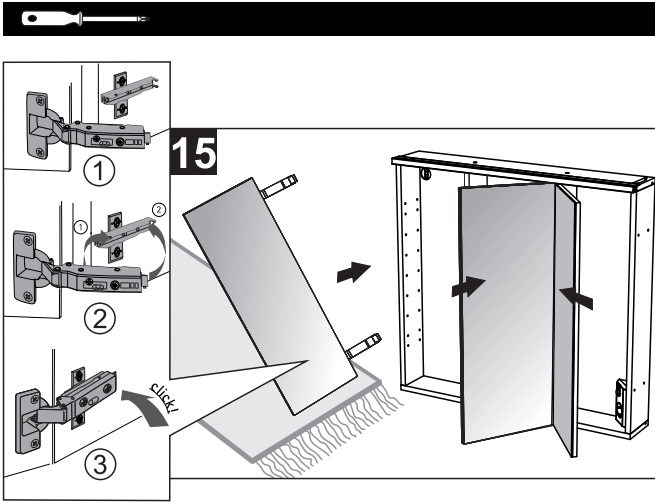
A	2 x	
B	2 x	
C	2 x	
D	4 x	
E	2 x	
F	1 x	
G	1 x	
H	2 x	



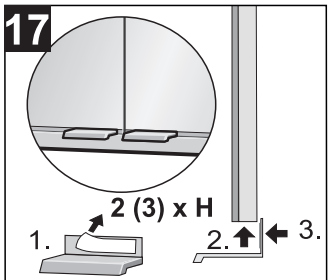
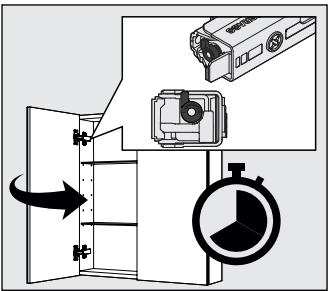
Nicht enthalten/not included:

I	2 x	
J	2 x	
K	2 x	
L	2 x	
M	2 x	





- DE Dämpfung einstellen:
- GB Set damping:
- FR Régler l'amortissement :
- NL Demping instellen:
- IT Impostare lo smorzamento:
- ES Ajustar la amortiguación:
- PT Ajuste de amortecimento:
- CZ Nastavit tlumení:
- PL Zestaw tłumienia:
- HU Csillapítás beállítás:
- SI Nastavite dušenje:
- RO Postavite prigušivanje:
- SK Nastavit tmenie:
- SE Podesite prigušivanje:
- DK Zадайте демпфериране:
- IS Setjað amortizæra:
- FI Ställ in dämpning:
- EST Sæt dæmpning:
- TR Stilla dempun:
- GR Αετα வைμένος:
- ES Seadista summutus:
- PT Sõnümlemeyi ayarlayın:
- GR Ρύθμιση απόσβεσης:

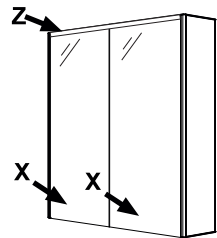


LED

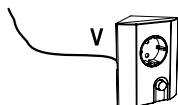
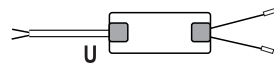
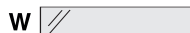
- DE Dieses Produkt enthält eine Lichtquelle der Energieeffizienzklasse F.
- GB This product contains a light source of energy efficiency class F.
- FR Ce produit contient une source lumineuse de classe d'efficacité énergétique F.
- NL Dit product bevat een lichtbron van energieefficiëntieklasse F.
- IT Questo prodotto contiene una sorgente luminosa di classe di efficienza energetica F.
- ES Este producto contiene una fuente de luz de clase de eficiencia energética F.
- PT Este produto contém uma fonte de luz de classe de eficiência energética F.
- CZ Tento výrobek obsahuje světelný zdroj třídy energetické účinnosti F.
- PL Ten produkt zawiera źródło światła o klasie efektywności energetycznej F.
- HU Ez a termék egy F energiahatékonysági osztályú fényforrást tartalmaz.
- SI Ta izdelek vsebuje vir svetlobe razreda energijske učinkovitosti F.
- HR Ovaj proizvod sadrži izvor svjetlosti razreda energetske učinkovitosti F.
- SK Tento výrobok obsahuje svetelný zdroj triedy energetickej účinnosti F.
- BH Ovaj proizvod sadrži izvor svjetlosti klase energetske efikasnosti F.
- BG Този продукт съдържа източник на светлина с клас на енергийна ефективност F.
- RO Acest produs conține o sursă de lumină de clasă F, de eficiență energetică.
- SE Denna produkt innehåller en ljuskälla av energieeffektivitetsklass F.
- DK Dette produkt indeholder en lyskilde til energieffektivitetsklasse F.
- IS Þessi vara inniheldur ljósgjafa orkunýtniflokks F.
- FI Tämä tuote sisältää energiatehokkuusluokan F valonlähteen.
- EST See toode sisaldab valgusallikat energiatõhususe klassiga F.
- TR Bu ürün, enerji verimliliği sınıfı F olan bir ışık kaynağı içerir.
- GR Αυτό το προϊόν περιέχει μια φωτεινή πηγή ενεργειακής απόδοσης τάξης F.

ERSATZTEILE / SPARE PARTS

- | | | | |
|-------------------------|----------------------|----------------------|-------------------|
| FR Pièces d'échange | CZ Náhradní díly | SK Náhradné diely | DK Reservedele |
| NL Onderdelen | PL Części zamienne | BH Rezervni dijelovi | IS Auka hlutir |
| IT Pezzi ricambio | HU Tartalék részek | BG Резервни части | FI Varaosat |
| ES Piezas de recambio | SI Rezervni deli | RO Piese de schimb | EST Varuosad |
| PT Peças sobresselentes | HR Pričuvni dijelovi | SE Reservdelar | TR Yedek parçalar |
| | | | GR Ανταλλακτικά |



Typ 25 10120:

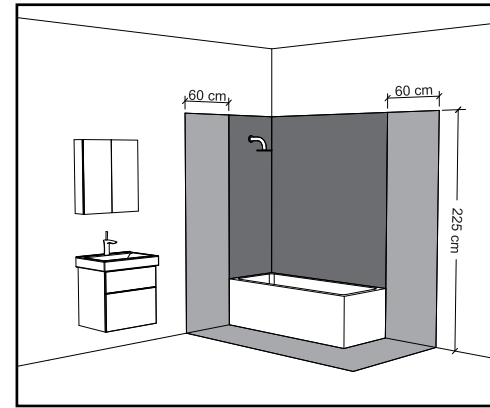


Typ 25 10133 / 10131 / 10130 / 10132:



SCHUTZBEREICH / SAFETY AREA

- | | | | |
|-----------------------|-----------------------|-------------------------|------------------------|
| FR Zone de protection | CZ Ochranné pásmo | SK Ochranné pásmo | DK Sikkerhedsafstand |
| NL Veiligheidsruimte | PL Strefa ochronna | BH Zaštitno područje | ES Verndarsvæði |
| IT Zone di protezione | HU Védett terület | RO Saucina zona | FI Turva-alue |
| ES Zona de protección | SI Zaščitno območje | RO Domeniu de protecție | FI Kaliseala |
| PT Zona de protecção | HR Zaštiteno područje | SE Skyddsområde | TR Korunma bölümü |
| | | | GR Περιοχή ή προστασία |



- Zone 1
- Zone 2
- Zone 3

SERVICE

- DE Bei Reklamationen diesen Abschnitt (Kopie) zusammen mit dem Kaufbeleg an Jokey schicken.
- GB In the event of a complaint, send this section (copy) together with the purchase receipt to Jokey.
- FR En cas de réclamation, envoyez cette section (copie) avec le reçu d'achat à Jokey.
- NL Stuur bij een klacht deze rubriek (kopie) samen met de aankoopbon naar Jokey.
- IT In caso di reclamo, inviare questa sezione (copia) insieme alla ricevuta di acquisto a Jokey.
- ES En caso de queja, envíe esta sección (copia) junto con el recibo de compra a Jokey.
- PT Em caso de reclamação, envie esta seção (cópia) junto com o comprovante de compra para Jokey.
- CZ V případě reklamace zašlete tento oddíl (kopii) spolu s účtenkou o koupi společnosti Jokey.
- PL W przypadku reklamacji wyslij ten dzial (kopia) wraz z dowodem zakupu do Jokey.
- HU Reklamáció esetén ezt a részt (másolat) a vásárlási bizonylattal együtt küldje el a Jokey-nak.
- SI V primeru reklamacije pošljite ta razdelek (kopijo) skupaj s potrdilom o nakupu na Jokey.
- HR U slučaju reklamacije, pošaljite ovaj odjeljak (kopiju) zajedno s potvrdom o kupnji Jokeyju.
- SK V prípade reklamácie zašlite túto časť (kópiu) spolu s dokladom o kúpe spoločnosti Jokey.
- BH U slučaju reklamacije, pošaljite ovaj odjeljak (kopiju) zajedno s računom o kupovini Jokeyju.
- ES В случај на репликација, изпратете този раздел (копие) заедно с разписката за покупка на Jokey.
- RO În cazul unei reclamații, trimiteți această secțiune (copie) împreună cu chitanța de cumpărare către Jokey.
- SE Vid reklamation skicka detta avsnitt (kopia) tillsammans med köpkvittot till Jokey.
- DK Ved reklamation sendes dette afsnit (kopi) sammen med købskvittering til Jokey.
- IS Kom til kvörtunur skal senda þennan hluta (afrit) ásamt kaupkvittun til Jokey.
- FI Jos sinulla on reklamaatio, lähetä tämä osa (kopio) ostokuitin kanssa Jokeylle.
- EST Kaebuste korral saada see jaotis (koopia) koos ostutõendiga Jokeyle.
- TR Şikayet durumunda bu bölümü (kopyasını) satın alma makbuzu ile birlikte Jokey'e gönderin.
- GR Σε περίπτωση καταγγελίας, στείλτε αυτό το τμήμα (αντίγραφο) μαζί με την απόδειξη αγοράς στο Jokey.

QS

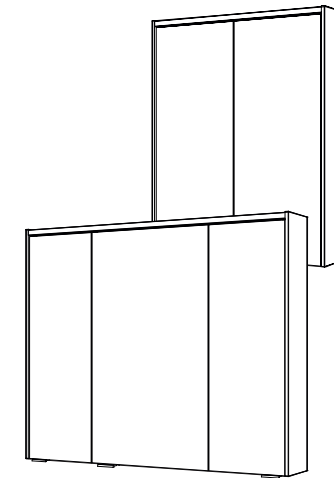
→ Service

430714308

25 10120 / 10133 / 10131 / 10130 / 10132 / 10 / 2022

Jokey Sohland GmbH Service Industriest. 4 D - 02689 Sohland / Spree
Tel.: +49(0)35936 / 36-0 Tel. Service: +49(0)35936 / 36-2265 email: js.service@jokey.com
Fax: +49(0)35936 / 36-2222 Fax Service: +49(0)35936 / 36-2281 http://www.jokey-online.com

sieper



25 10120
25 10133
25 10131
25 10130
25 10132



	25 10120	25 10133 / 10131 / 10130 / 10132	
A	2 x	2 x	
B	8 x	8 x	
C	4 x	4 x	
D / E	4x + 2x	4x + 2x	
F	1 x 2	1 x 2	
G	12 x	24 x	
H	2 x	3 x	
I	1 x	1 x	
J	1 x	1 x	4 x 50
K	1 x	1 x	6 x 36
L	1 x	1 x	

